

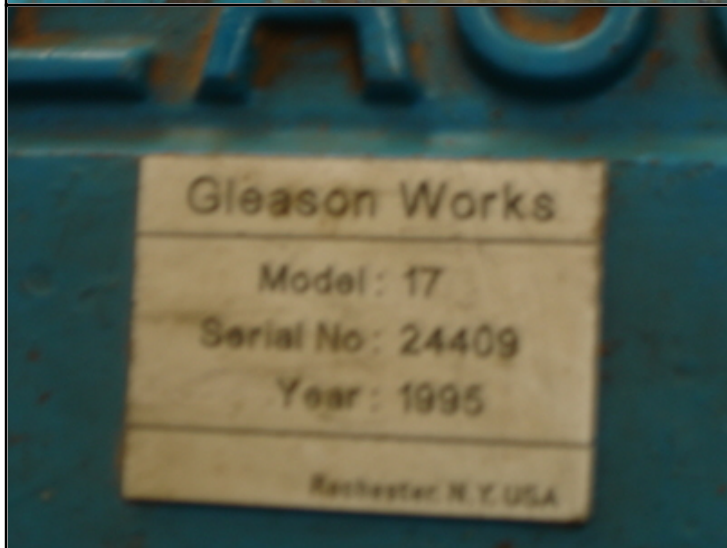
# Farrell Engineering Ltd

Westbury House, 23-25 Bridge Street, Pinner HA5 3HR United Kingdom

Tel. : 0044-208-3432 3291 Fax : 044-208-9657586

Email : [chan@farrellengineering.com](mailto:chan@farrellengineering.com)







Category	:-	Gear Related Machines	Serial No	:-	
Model	:-	17	Country	:-	United States
Make	:-	gleason	Type of Machine	:-	spiral bevel gear tester universal
Year	:-	0	Weight	:-	0.0
Dimensions	:-		Power	:-	
Location	:-	Mumbai Warehouse, India	Asking Price	:-	On Request

**Specifications :-**

THIS MACHINE IS DESIGNED TO TEST THE RUNNING QUALITIES OF STRAIGHT, SPIRAL BEVEL, AND HYPOID GEARS WHOSE SHAFTS INTERSECT AT 90 DEGREES, THE GLEASON 17 TESTS GEARS FOR SIZE, RUN-OUT, SMOOTHNESS, AND QUIETNESS OF OPERATION AND PERMITS INSPECTION OF THE ACTUAL TOOTH CONTACT UNDER LOAD (TOOTH BEARLING).

MAXIMUM DIAMETER OF GEAR	18Inches
MAXIMUM OFFSET C/L OF GEAR SPINDLE ABOVE OR BELOW C/L OF PINION SPINDLE	3.5Inches
DISTANCE FROM CENTER OF GEAR SPINDLE TO NOSE OF PINION SPINDLE, MAX/MIN	12Inches / 5.75Inches
DISTANCE FROM CENTER OF PINION SPINDLE TO NOSE OF GEAR SPINDLE, MAX/MIN	6.37 Inches / 3.50 Inches

**Descriptions :-**